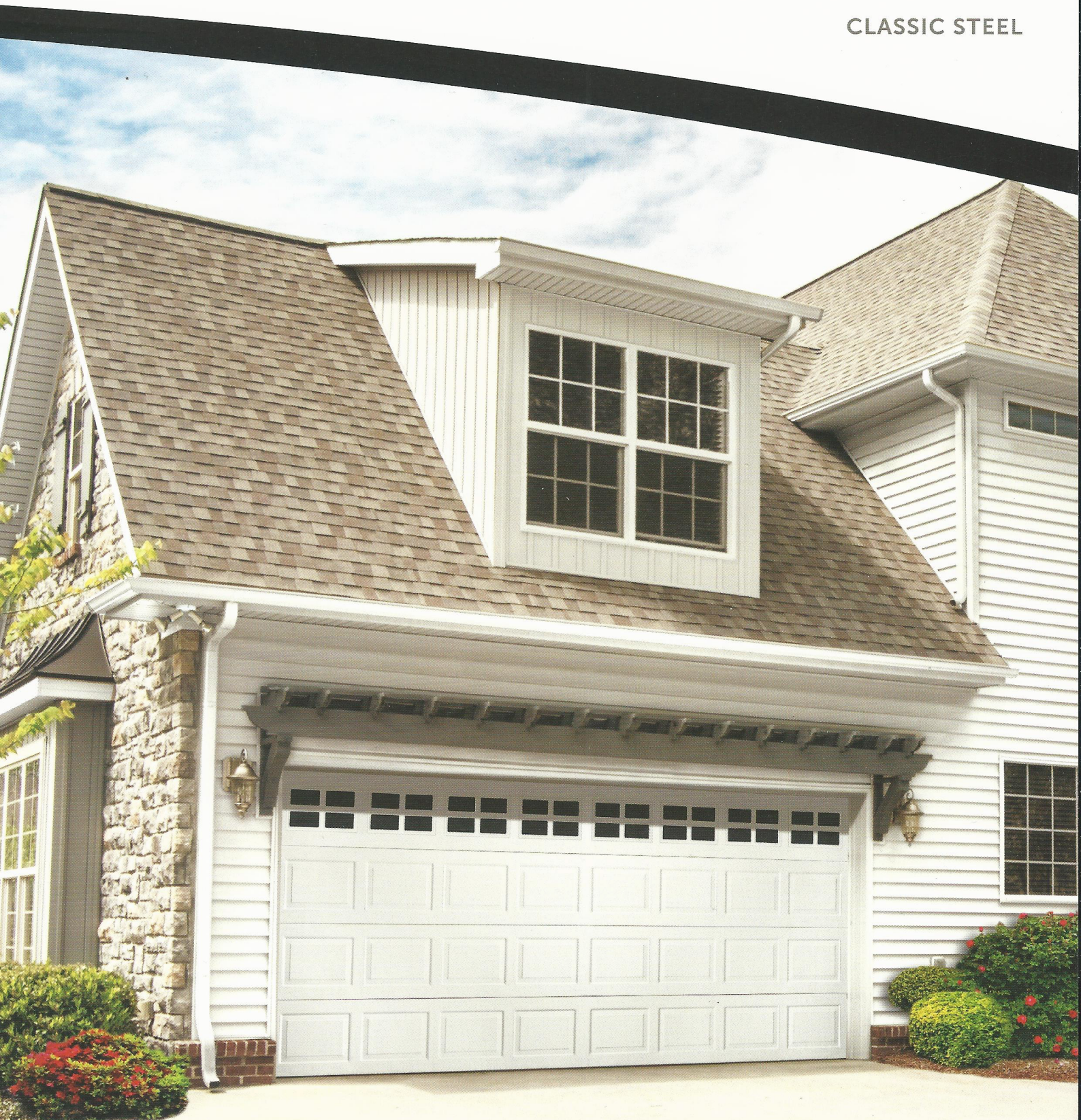


Wayne
Dalton[™]
GARAGE DOORS

MODELS

8000/8100/8200

CLASSIC STEEL



Colonial panel, White paint, Stockton I windows

Affordable. Stylish.

Models 8000/8100/8200 offer a variety of styles, colors and windows, as well as insulation and wind load options. Our entry-level doors offer the right choice for any style, climate and budget.



Model 8100 Ranch panel, Almond finish, Cascade II windows

PERFORMANCE FEATURES

Most 8000 Series doors are available with structural reinforcements for use in coastal regions. These models meet wind load requirements of the International Building Code, Florida Building Code and Texas Dept. of Insurance.

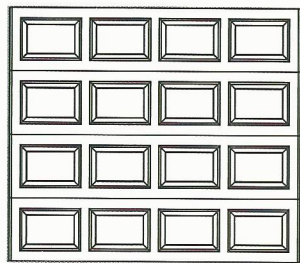


MODEL NUMBER	8200	8100	8000
Polystyrene Insulation	Yes	Yes	No
Insulation R-value*	7.4	3.7	N/A
Construction	2 Layer (Steel/Insulation)	2 Layer (Steel/Insulation)	1 Layer (Steel)
10 Year Warranty	Yes	Yes	Yes

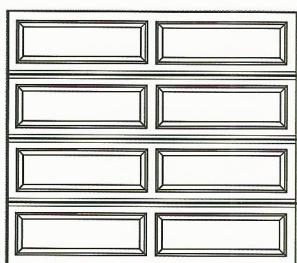
*Wayne Dalton uses a calculated door section R-value for our insulated doors.



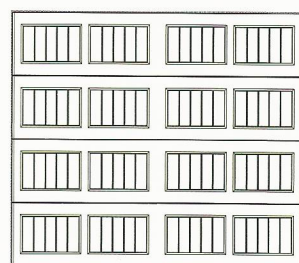
1 Choose your Style



Colonial



Ranch



Sonoma

Not all panels available in all areas. See dealer for details.

2 Choose your Color



White



Almond



Taupe



Brown

3 Choose your Window

For Colonial and Sonoma Panels



Cascade I



Cascade II



Cathedral I



Cathedral II



Clear II



Clear II



Sherwood I



Sherwood II



Stockbridge II



Stockton I



Stockton II



Arched Stockton



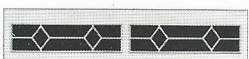
Prairie I



Prairie II



Waterton I



Waterton II



Williamsburg I



Williamsburg II



Arched Stockton Double (For double car doors)



Arched Stockton Single (For double car doors)

For Ranch Panels



Cascade II



Cathedral II



Clear II



Prairie II



Sherwood II



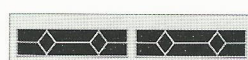
Stockbridge II



Stockton II



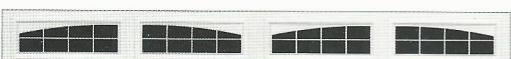
Arched Stockton



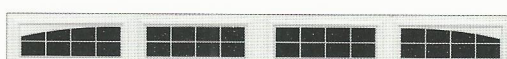
Waterton II



Williamsburg II



Arched Stockton Double (For double car doors)



Arched Stockton Single (For double car doors)

Not all windows available in all areas. Consult your dealer for details.

Decorative hardware is available, see your dealer or visit our website at www.Wayne-Dalton.com for details.

BEFORE



Model 810Q Sonoma panel, White finish with Stockbridge II windows, decorative hardware

Garage Door Design Center

Go to Wayne-Dalton.com today and click on Design Center. Here you can upload a photo of your home and experiment with panel designs, color options, window styles and hardware designs. Instant curb appeal awaits with just the click of your mouse!



Wayne-Dalton
GARAGE DOORS™

DISTRIBUTED BY:

2501 S. State Hwy 121 Bus., Ste 200
Lewisville, TX 75067



www.wayne-dalton.com

© 2016 Wayne Dalton, a Division of Overhead Door Corporation. Consistent with our policy of continuing product improvement, we reserve the right to change product specifications without notice or obligation. Item 330448 15M 05/2016 JAR